

# 100 LIGHT

 **COPT DEFENSE** + **CBRE**  
PROPERTIES

# A NEW LIGHT

There's an electricity in the air, and it's all radiating from 100 Light — you feel it in every step across the vibrant Lumen Plaza, in every eye-widening view, at every next-level amenity, and in the nonstop rhythm of downtown Baltimore coursing through it all.

**Where there's light, there's energy.**



# SHINING EVEN BRIGHTER

With new capital improvements, cutting-edge modernizations, and street-to-sky amenities, 100 Light has everything you expect from your workplace — plus a dash of the unexpected.



## Plaza Renovation

The newly redesigned Lumen Plaza at 100 Light offers a lush outdoor greenspace to relax, recharge, and retreat from the workday



## Elevator Modernization

Renovated cabs optimized with destination dispatch to reduce wait & travel times



## Security Enhancements

Lobby turnstiles, Datawatch access upgrades and monitored security cameras



## Mechanical System Upgrades

An improved building automation system and new air handling units provide better control and distribution — that's how you create a climate of comfort

# DESIGNED FOR PEACE OF MIND

Helmed by our onsite property management team, 100 Light's commitment to providing tenants and visitors with the utmost peace of mind is unwavering.



24-hour onsite security



Keycard-operated elevators with destination dispatch



VisitorWatch management system where guests are issued a personal QR code that only provides access to floors granted by the tenant



Monitored CCTV cameras



Lumen Plaza design informed by safety and security



# A FALCON- EYE VIEW

When you look out from 100 Light, all of Baltimore stretches out before you — the emerald of Camden Yards' outfield, the Inner Harbor teeming with life, the glittering waterfront just steps away.

When you nest here, you share the same views enjoyed by our famous falcons that have made their home atop 100 Light. These dramatic urban vistas can only be experienced at the city's tallest and most iconic tower.





# TYPICAL FLOOR PLAN

Panoramic  
Views On All Sides

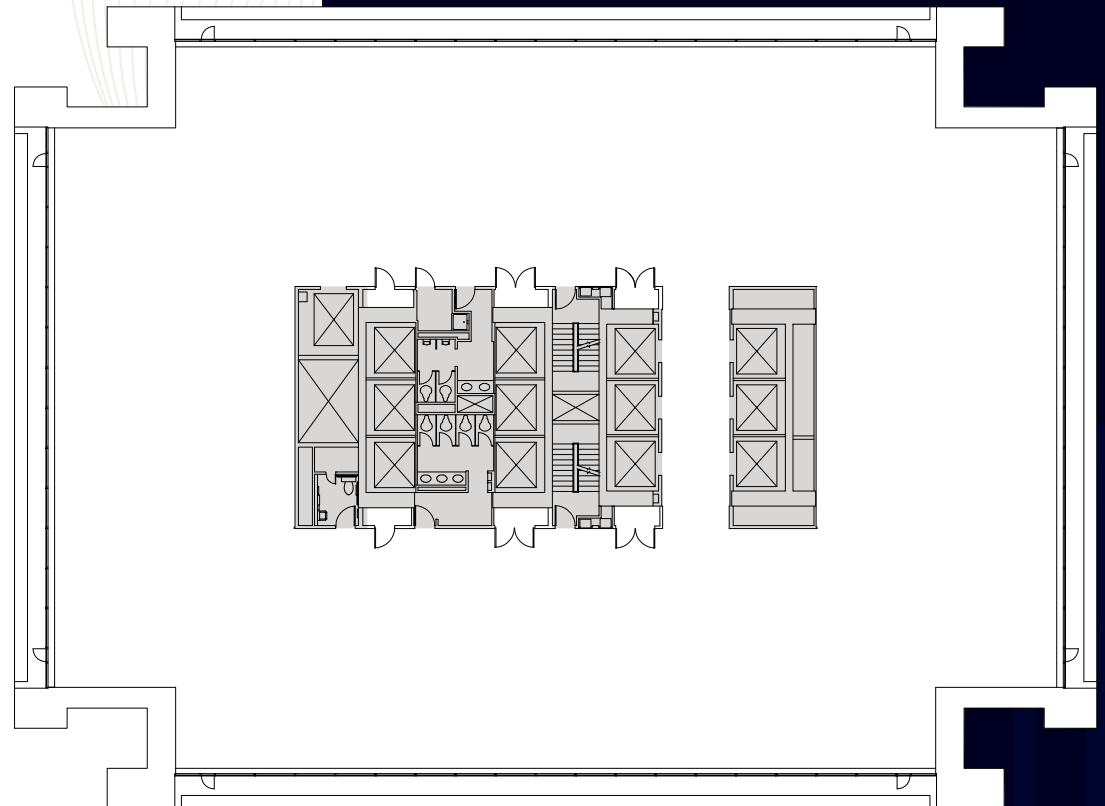
35 Floors

Class A Office Space

561,914 Total SF

15-16k SF Column-Free  
Floor Plates

PRATT STREET



LIGHT STREET



# THE NEW CENTER OF ENERGY

Amongst the rush of the business district and the bustle of the harbor, 100 Light serves as the hub of the city's professional community, right in the heart of Baltimore.



# STEPS TO EVERYTHING

## Dining

1. The Capital Grille
2. The Cheesecake Factory
3. Chef Paolino Cafe
4. Chick-fil-A
5. Chipotle
6. Cusi
7. Jimmy John's
8. Kona Grill
9. Morton's The Steakhouse
10. Pitamore
11. Pratt Street Ale House
12. R&R Taqueria
13. Shake Shack
14. South Street Deli
15. Starbucks
16. Subway
17. Water Street Tavern
18. Nalley Fresh
19. Dunkin
20. B&O American Brasserie
21. Rosina Gourmet

## Entertainment

1. Camden Yards
2. Hippodrome Theatre
3. M&T Bank Stadium
4. CFG Bank Arena

## Conveniences

1. 7-11
2. Bank of America
3. CVS
4. FedEx
5. M&T Bank
6. PNC
7. Royal Farms
8. SunTrust
9. UPS
10. Walgreens
11. Wells Fargo

## Hotels

1. Days Inn
2. Delta Hotels
3. Hampton Inn & Suites
4. Hilton
5. Holiday Inn
6. Hotel RL
7. Hyatt Regency
8. Kimpton Hotel Monaco
9. Marriott
10. Renaissance Hotel
11. Residence Inn
12. Sheraton

## Fitness

1. FX Studios/  
Under Armour  
Performance Center
2. Planet Fitness



# COMMUTE AT LIGHT SPEED

Get to 100 Light in a flash — no matter how many wheels you're on.

## BIKE

---



- Onsite bike storage on Lumen Plaza and B1

## BUS

---



- Stops immediately outside both the Light and Charles Street entrances

## TRAIN

---



- 4 blocks from the Camden Yards MARC/Light Rail commuter station, offering a direct link to D.C. and western Maryland
- Within 2 blocks of the Charles Center Metro Station and 3 blocks from the Convention Center Light Rail Station





## CAR

---



- Effortless access to I-95, I-83, and I-295 expressways
- 1.5/1,000 parking ratio
- 825 total parking spaces between 100 Light (275 reserved spaces) and the adjacent 30 Light garage (550 spaces)
- Elevators from underground parking structure provide direct access to low- and high-rise offices

# ALL ROADS LEAD TO 100 LIGHT

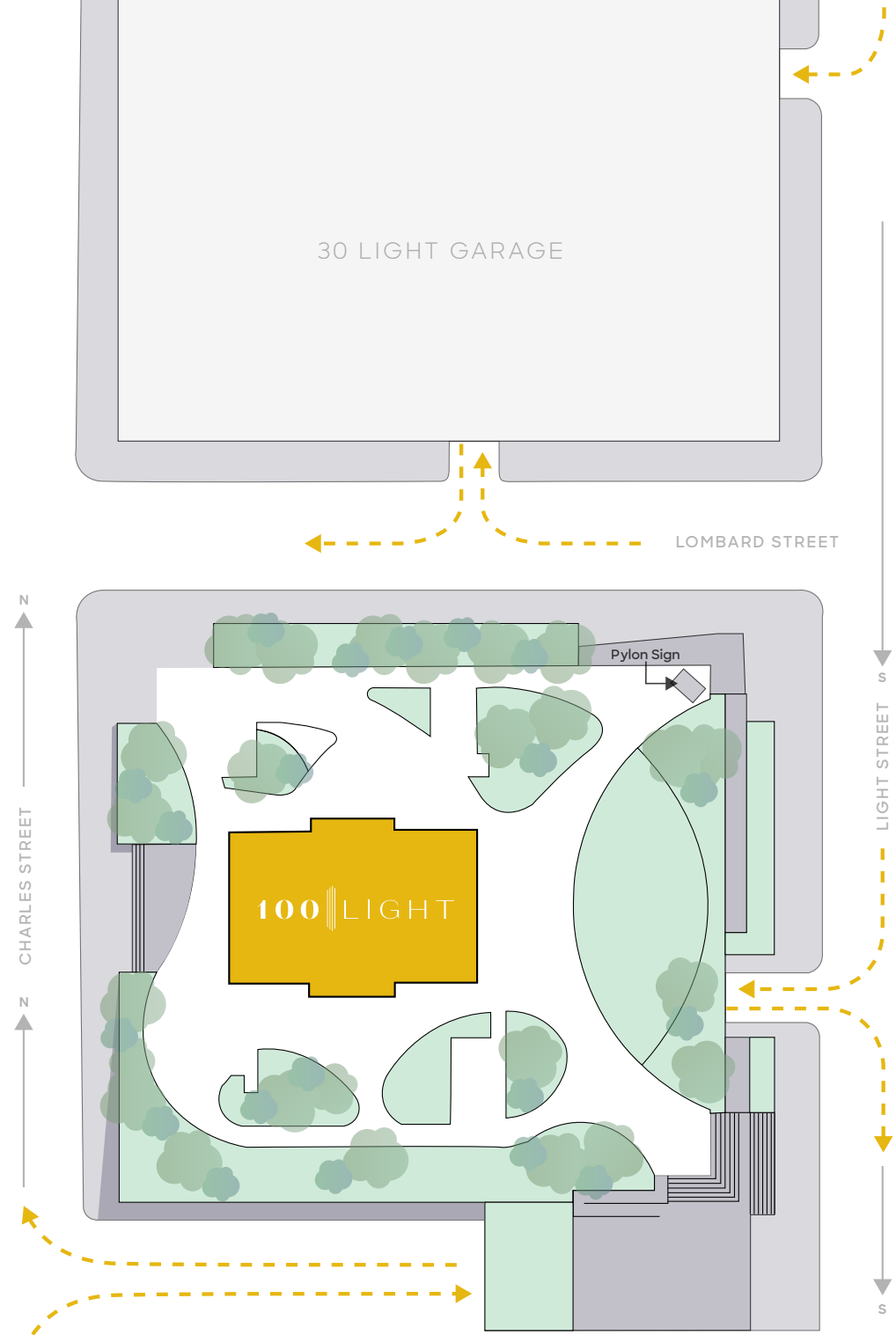
-  Bus Stops
-  Train Stations
-  Interstate Access
-  Dedicated Bike Lane



# ENTER & EXIT WITH EASE

With two dedicated parking garage entrances/exits off both Light and Charles Streets, you'll never have to wait to start or finish your commute.

---> Parking Garage Access

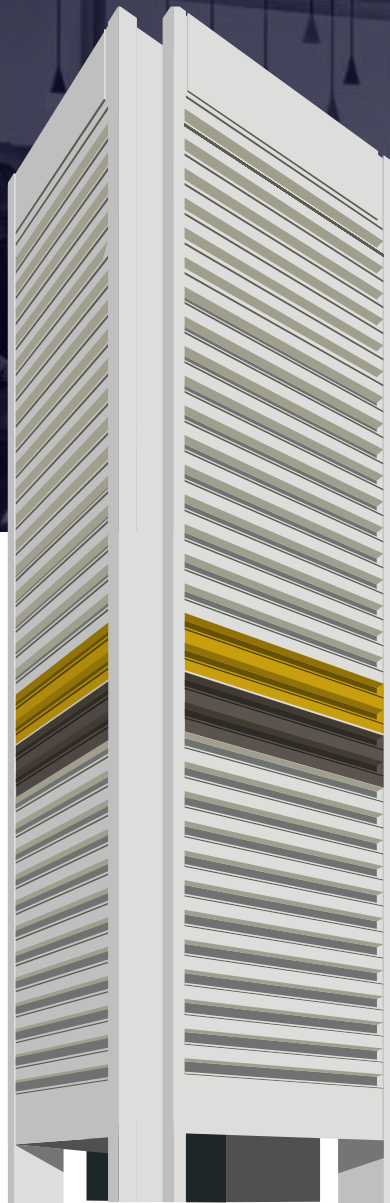


# THE HIGHLIGHT OF YOUR WORKDAY

Whether you're working up a sweat at the spa-quality fitness center or grabbing a seat at The Center Club for a cocktail with a view, 100 Light's best-in-class amenities make your nine-to-five come alive.



# BEST-IN-CLASS AMENITIES



**FLOOR 18: 1817** Fitness Center & Single-Seat Salon

**FLOOR 17: 1817** Café, Lounge & Games

**FLOOR 16: THE CENTER CLUB**

**FLOOR 15: THE CENTER CLUB**

**LUMEN PLAZA** A Greener Space to Work & Play

**BASEMENT L1** 100+ Seat Conference Center, Lounge & Kitchen, Bike Room & Loading Dock

**BASEMENT L2** Reserved Parking

**BASEMENT L3** Reserved Parking



# 1817

AT 100 LIGHT

In 1817, Baltimore became the first city in America with public street lighting – a monumental achievement in infrastructure. Now, 100 Light is keeping that flame alive with the introduction of 1817: a sky-high, panoramic amenity space perched on the building's 18th and 17th floors. Welcome to the Highlight of Your Workday.

## FLOOR 18



Fitness Center



Locker Rooms



Saunas



Single-Seat Salon

## FLOOR 17



Lounge



Games



Made-to-Order Café



Grab-&-Go Market



Dining



FLOOR 18



Fitness Center



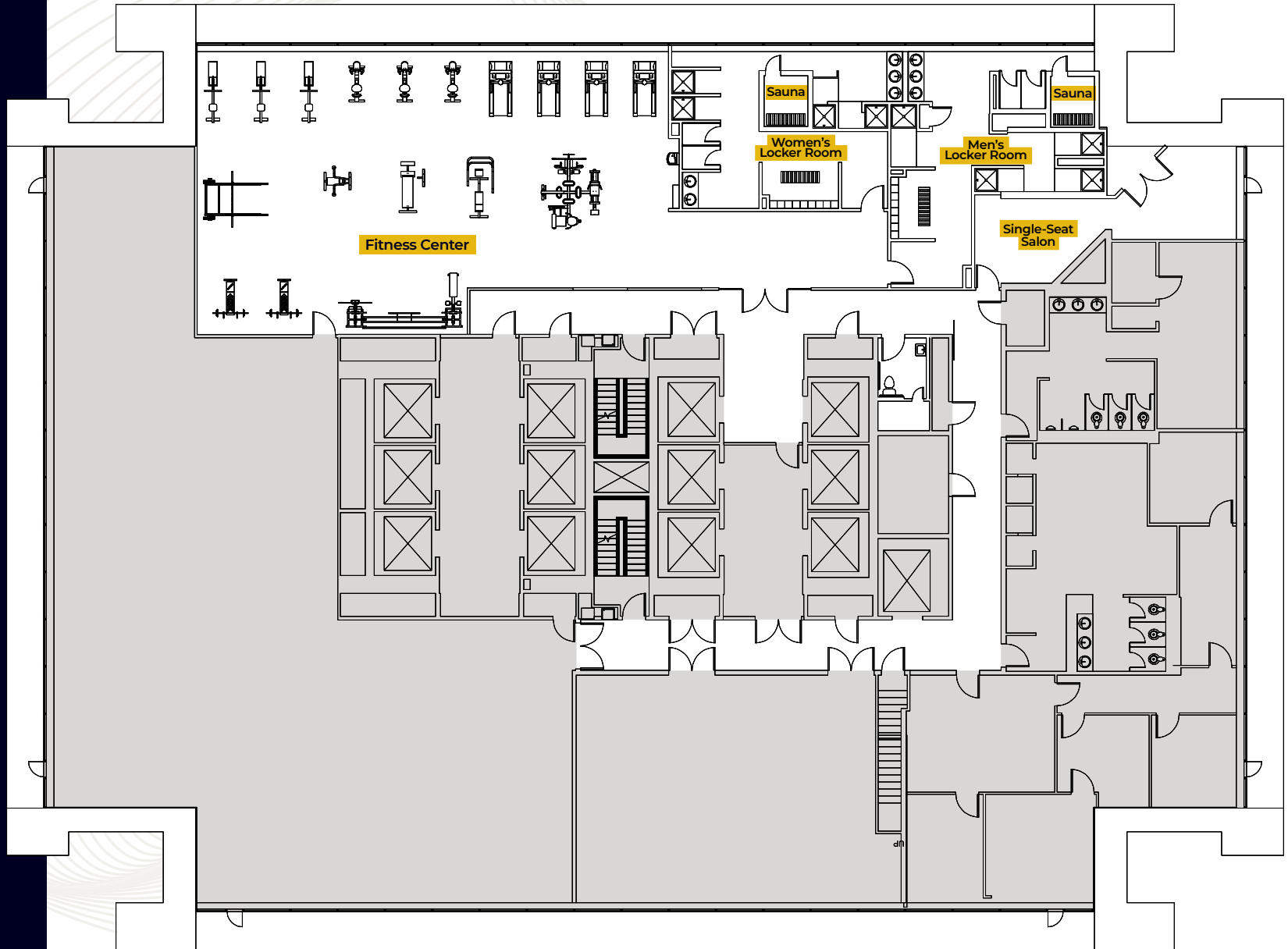
Locker Rooms



Saunas



Single-Seat Salon



# FITNESS CENTER, LOCKER ROOMS + SAUNAS

FLOOR 18



FLOOR 17



Lounge



Games



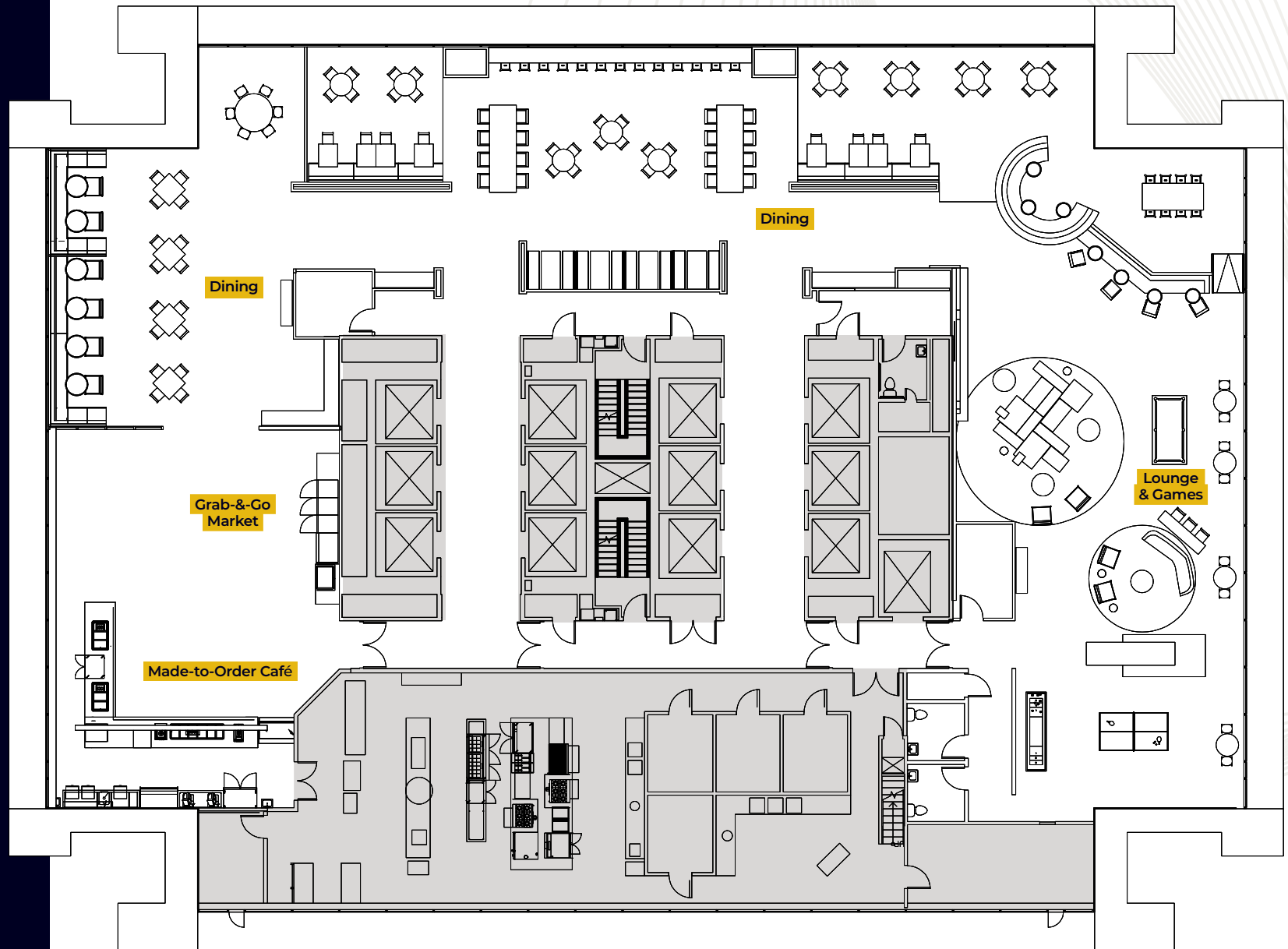
Made-to-Order  
Café



Grab-&-Go  
Market



Dining



# LOUNGE & GAMES + DINING

FLOOR 17

1817  
AT 100 LIGHT



# MADE-TO-ORDER CAFÉ + GRAB-&GO MARKET

FLOOR 17

1817  
AT 100 LIGHT





## THE CENTER CLUB

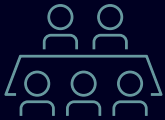
### **Meet Me At The Center (Club)**

A pillar of the city's professional and business community, The Center Club is an exclusive gathering place where Baltimore's most influential come to raise a glass and drink in the views. Spanning both the 15th and 16th floors, The Center Club doubles as a premium event space.



# EVEN MORE IN STORE...

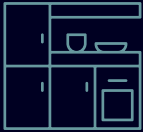
## BASEMENT L1



100+ Seat  
Conference Center



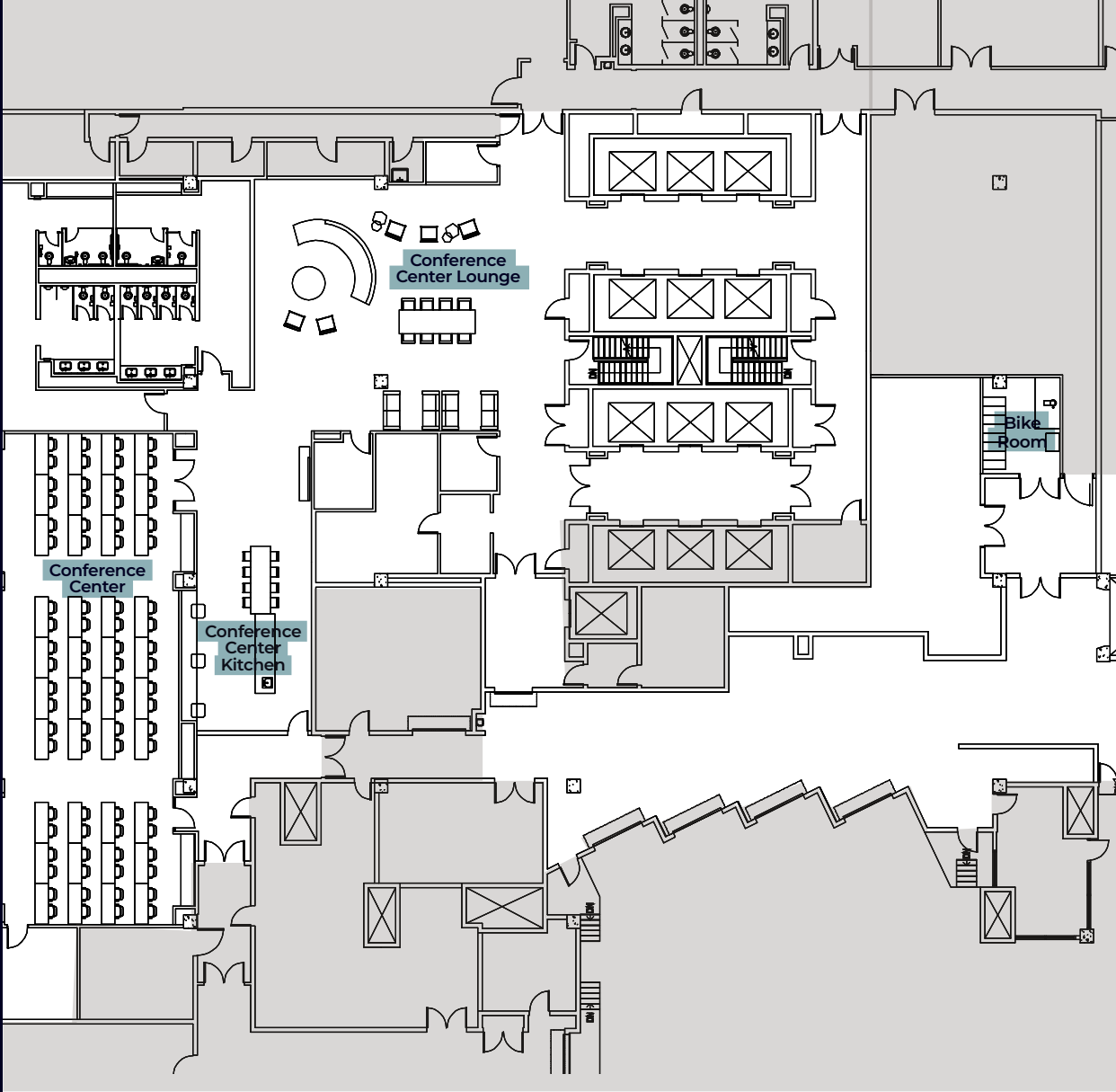
Conference Center  
Lounge



Conference Center  
Kitchen



Bike Room



# 100+ SEAT CONFERENCE CENTER + LOUNGE

BASEMENT L1





# A HAVEN BY THE HARBOR

Surrounding the building on all four sides, the newly renovated and redesigned Lumen Plaza energizes 100 Light from the ground up.

Expertly landscaped and perfectly manicured, the expansive outdoor area offers enough greenspace for group classes and community events, or to simply enjoy lunch and some fresh air. Lumen Plaza is a haven for you to relax, recharge, and retreat from the workday.



# *A GREENER SPACE TO WORK & PLAY*



100 LIGHT



# 100 || LIGHT

## KEVIN WILLE

+1 410 244 3148  
kevin.wille@cbre.com

## ADAM CERIBELLI

+1 410 244 3175  
adam.ceribelli@cbre.com

## JORDANA POLLACK

+1 410 244 3111  
jordana.pollack@cbre.com

## DAVE FIELDS

+1 410 244 3130  
david.fields@cbre.com



© 2021 CBRE, Inc. All rights reserved. This information has been obtained from sources believed reliable, but has not been verified for accuracy or completeness. You should conduct a careful, independent investigation of the property and verify all information. Any reliance on this information is solely at your own risk. CBRE and the CBRE logo are service marks of CBRE, Inc. All other marks displayed on this document are the property of their respective owners, and the use of such logos does not imply any affiliation with or endorsement of CBRE. Photos herein are the property of their respective owners. Use of these images without the express written consent of the owner is prohibited.